

# User Manual

## Contents

Overview .....	3
Use.....	4
Package contents/parts .....	6
General information.....	7
Reading and storing the user manual .....	7
Explanation of symbols .....	7
Safety .....	8
Proper use.....	8
Safety instructions.....	8
Checking the air bed and package contents.....	11
Inflating the air bed.....	12
Deflating the air bed.....	12
Cleaning.....	13
Storage .....	14
Repairing the air bed.....	15
Technical data .....	16
Declaration of conformity.....	16
Disposal.....	16
Disposing of the packaging .....	16
Disposing of the air bed .....	16

## INTEX® DELUXE AIR BED QUEEN SIZE



6207-\*\*\*-R0-1906



**PRODUCED IN CHINA FOR:**  
STEINBACH VERTRIEBSGMBH  
AISTINGER STRASSE 2  
4311 SCHWERTBERG  
AUSTRIA

### AFTER SALES SUPPORT

98766

☎ GB IE 0333 400 45 48  
💻 [www.johnadams.co.uk](http://www.johnadams.co.uk)

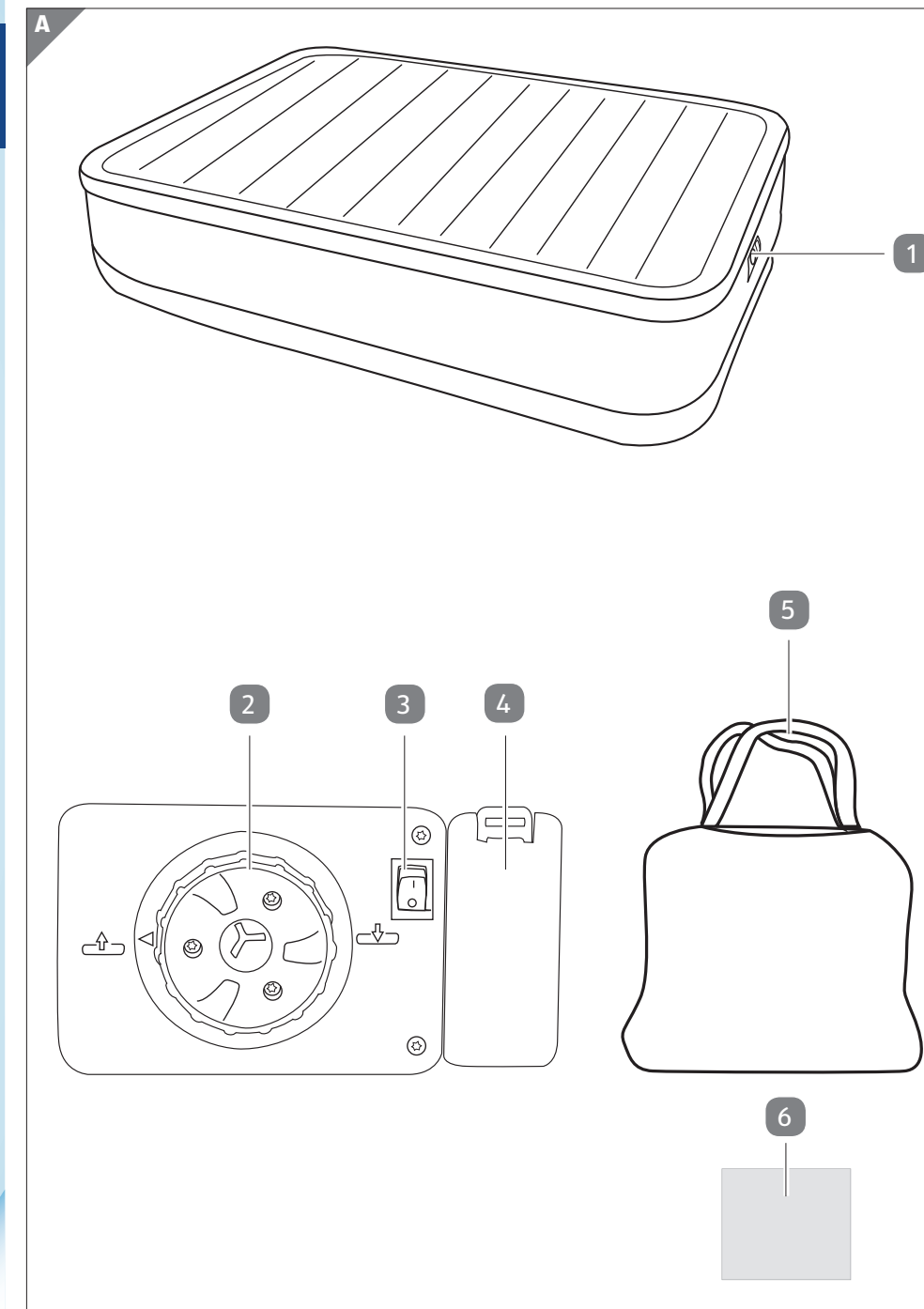
MODEL:  
64140

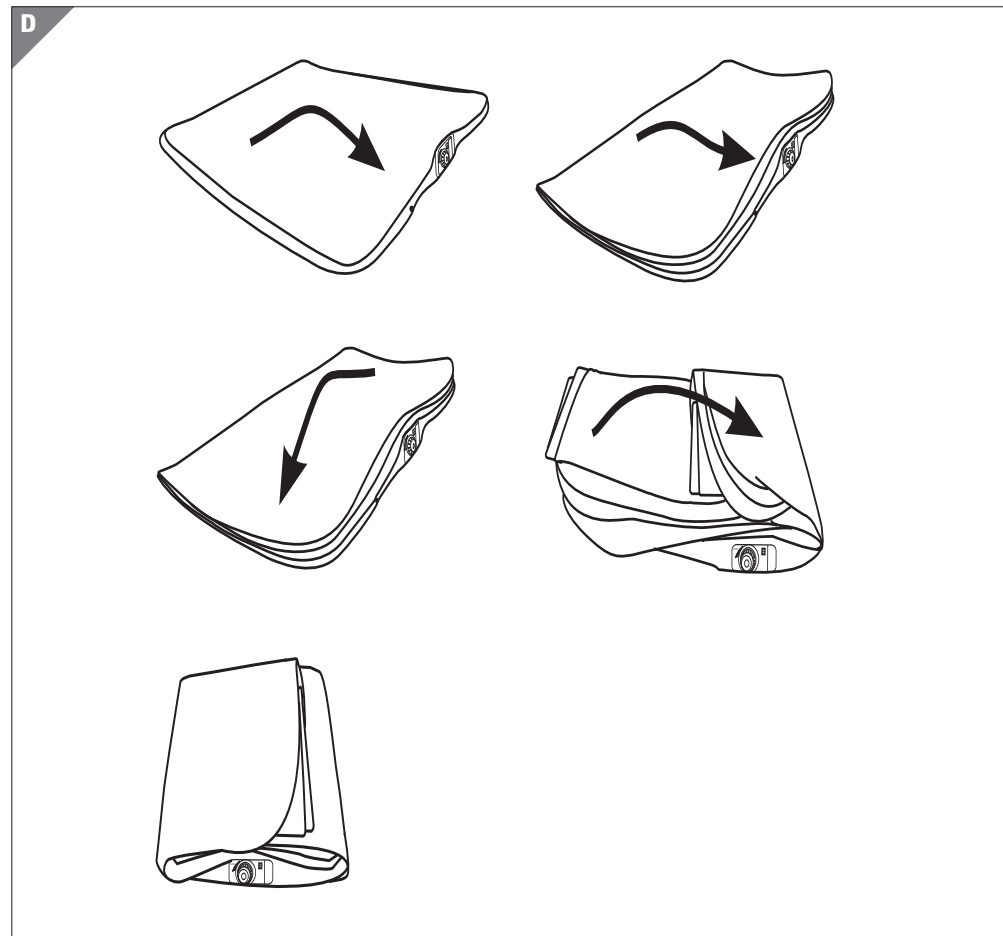
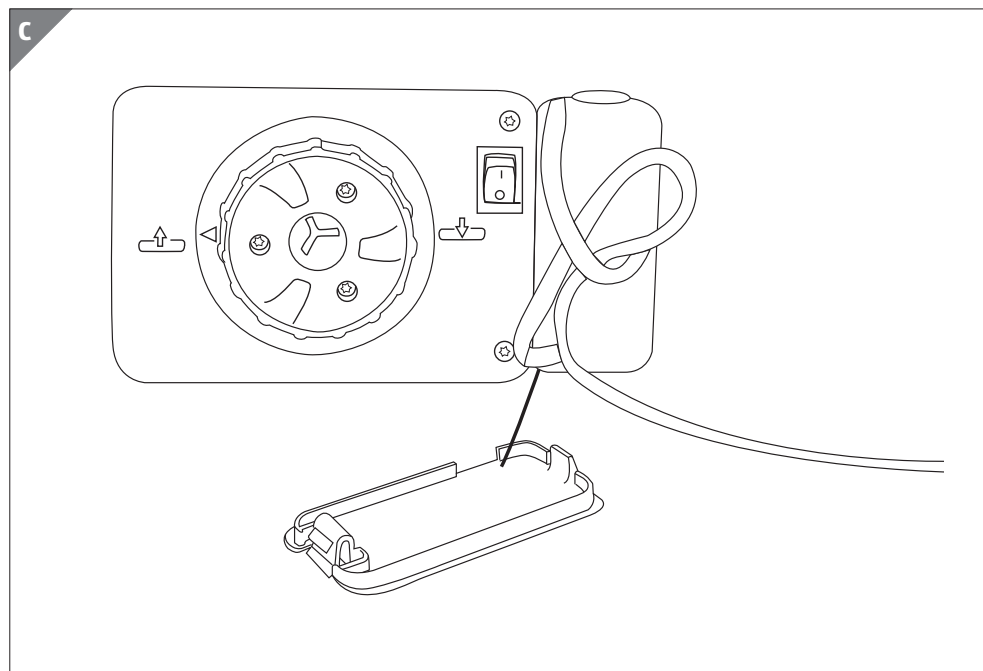
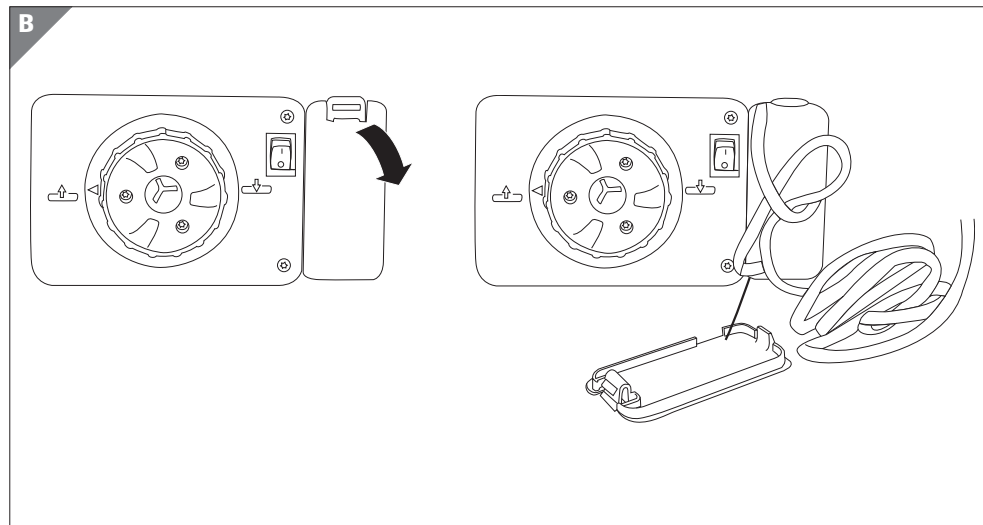
10/2019

**3**  
YEAR  
WARRANTY



Dok./Rev.-Nr. 197268\_20190610





### Package contents/parts

- 1 Air pump (built-in)
- 2 Control dial
- 3 On/Off switch
- 4 Mains cable cover
- 5 Transport bag
- 6 Repair patch

## General information

### Reading and storing the user manual



This user manual accompanies this deluxe air bed queen size (hereafter referred to as the “air bed”), and contains important information on setup and handling.

Before using the air bed, read the user manual carefully. This particularly applies to the safety instructions. Failure to do so may result in personal injury or damage to the air bed.

The user manual is based on the standards and rules in force in the European Union. When abroad, you must also observe country-specific guidelines and laws.

Store the user manual for further use. Make sure to include this user manual when passing the air bed on to third parties.

### Explanation of symbols

The following symbols and signal words are used in this user manual, on the air bed or on the packaging.



This signal symbol/word designates a hazard with moderate risk, which may result in death or severe injury if not avoided.



This signal word warns of possible damage to property.



This symbol provides you with useful additional information on handling and use.



Declaration of Conformity (see chapter “Declaration of Conformity”): Products labelled with this symbol meet all applicable provisions of the European Economic Area.



Protection class II



The permissible working pressure is approx. 0.025 bar.



The maximum load is approx. 273 kg.



The air bed may not be used by children under 1 year of age.



The GS symbol indicates that this product has been tested and found in compliance with accepted national standards.

## Safety

### Proper use

The air bed is exclusively designed for resting and sleeping on. It is only intended for private use and not suitable for commercial purposes.

Only use the air bed as described in this user manual. Any other use is considered improper and may result in damage to property or persons.

The manufacturer or vendor cannot be held liable for damages or injury incurred through improper or incorrect use.

### Safety instructions



#### Risk of electric shock!

A faulty electrical installation, excessive line voltage, or incorrect operation may result in an electric shock.

- Only connect the air pump if the line voltage of the socket corresponds to the specification on the rating plate.
- Only connect the air pump to an easily accessible socket so that you can quickly disconnect it from the power supply in the event of a malfunction.
- Do not use the air bed if it is visibly damaged or if the mains cable or mains plug is defective.
- If the mains cable of the air pump is damaged, it must be replaced by the manufacturer, its customer service team or a person with similar qualifications.
- Do not operate the air pump with an external timer or separate remote control system.

- Do not open the housing; instead, have a qualified professional perform repairs. Contact the after sales support line for assistance. Liability and warranty claims are waived in the event of repairs performed by the user, improper connection or incorrect operation.
- Only parts that comply with the original device construction may be used for repairs. Electrical and mechanical parts, which are essential for providing protection against sources of danger, are located in this air bed.
- Do not immerse the air pump, the mains cable or the mains plug in water or other liquids.
- Never touch the mains plug with damp hands.
- Do not pull the mains plug out of the socket by the mains cable; instead, always pull it out by the plug.
- Never use the mains cable as a carrying strap.
- Keep the air bed away from open fire and hot surfaces.
- Do not kink the mains cable and do not lay it over sharp edges.
- Only use the air bed indoors. Do not use it in wet rooms or in the rain.
- Never reach to retrieve an electrical device if it has fallen in water. In such a case, immediately disconnect the mains plug.
- Make sure that children do not insert any objects into the air bed.
- Always switch the air pump off and pull the mains plug out of the socket when you are not using the air bed, cleaning it or in the event of a malfunction.



**Danger for children and persons with impaired physical, sensory or mental capacities (e.g. partially disabled persons, older persons with reduced physical and mental capacities) or lack of experience and knowledge (e.g. older children).**

- This air bed is not intended for use by persons (including children) with reduced physical, sensory or mental capabilities, or lack of experience and knowledge, unless they have been given supervision or instruction concerning use of the air bed by a person responsible for their safety. Children must not play with the air bed. Cleaning and user maintenance must not be performed by unsupervised children.
- Keep children under the age of eight away from the air bed and mains cable.
- Make sure that children do not play with the plastic wrapping. They may get caught in it when playing and suffocate.



### **Risk of fire and explosion!**

Never expose the air bed to flammable materials, there is a risk of fire or explosion.

- Do not use any cleaning or repair sprays that could catch fire and explode.
- Keep open flames and electrical heat sources away from the air bed.



**WARNING!**

**Risk of drowning!**

The air bed is not suitable for use in water. It is not a raft or buoyancy aid. There is a risk of drowning or a short circuit if you use it on water.

- The air bed is only suitable for domestic home use.
- Never use the air bed near or on bodies of water.
- Never let children play near or with the air bed.

**NOTICE!**

**Risk of damage!**

Improper handling of the air bed may damage it.

- Place the air bed on an easily accessible, level, dry and sufficiently stable surface where there are no sharp edges or pointy objects.
- Never expose the air bed to high temperatures (heaters etc.) or to weather (rain etc.). Never fill the air bed with liquid.
- Do not exceed the air bed's load bearing capacity of 273 kg.
- Discontinue using the air bed if the outer body is cracked, broken, or deformed.

## Checking the air bed and package contents

**NOTICE!**

**Risk of damage!**

If you are not cautious when opening the packaging with a sharp knife or other pointed object, you may quickly damage the air bed.

- For this reason, be very careful when opening it.
  1. Take the air bed out of the packaging.
  2. Check to make sure that all parts are included (see **Fig. A**).

3. Check whether the air bed or individual parts are damaged. If this is the case, do not use the air bed. Contact the manufacturer via the service address indicated on the warranty card.

## Inflating the air bed

### NOTICE!

#### Risk of damage!

Improperly inflating the air bed may damage it.

- Only inflate the air bed with the built-in air pump.

The air bed needs to be fully inflated in a warm, well-ventilated room at least 5 days before first use.

1. Find an unobstructed area of at least 160 × 210 cm where there are no sharp edges or pointy objects.
2. Remove the mains cable cover **4** and insert the mains plug of the air pump **1** into a properly installed socket (see **Fig. B**).
3. Lay the mains cable so that it does not pose a tripping hazard.
4. Turn the control dial **2** clockwise up to the stop point (see **Fig. C**).
5. Then set the On/Off switch **3** to position **I**. Use the control dial to adjust the supply of air.
6. It will take approx. 5 minutes for the bed to inflate; the recommended working pressure is 0.36 psi (0.025 bar).
7. As soon as the desired firmness has been reached, set the On/Off switch to position **0**.

## Deflating the air bed

1. Turn the control dial **2** counterclockwise up to the stop point.
2. Set the On/Off switch **3** to position **I** to release the air.
3. As soon as the air bed has been fully deflated, set the On/Off switch back to position **0**.





- The ambient temperature at the set up location affects the inner pressure of the air bed. At a low ambient or room temperature, the air in the air bed will contract and the air bed will feel softer.
  - Add air until the desired firmness has been attained.
- At a high ambient temperature, air in the air bed will expand; the air bed will feel harder and there is a risk of it bursting.
  - Deflate the air bed somewhat to prevent damage; this will also ensure that it is softer. Do not expose the air bed to extreme hot or cold temperatures.
- The air in the air bed may expand or contract depending on the load on the bed. The firmness of the air bed may also change as a result.
  - Follow the above recommendations to add or release some of the air.

It is normal for new vinyl to expand. It is therefore possible that the air bed initially loses some of its firmness and has to be inflated in order to maintain the desired level of firmness. This is a normal occurrence during the first days of use. The specified dimensions are only of an approximate nature and may vary depending on the temperature of the vinyl and the air.

## Cleaning



### **Risk of electric shock!**

Water that has penetrated the air bed may result in an electric shock.

- Disconnect the mains plug before cleaning.

### **NOTICE!**

### **Risk of short circuit!**

Water and other liquids that have penetrated the air bed may cause a short circuit.

- Make sure that no water or other liquids penetrate the air bed.
- Never wash the air bed in a washing machine, as this will destroy it.

**NOTICE!**

**Risk of damage!**

Improper handling or cleaning of the air bed may result in damage to the air bed.

- Do not use any aggressive cleaners, brushes with metal or nylon bristles, or sharp or metallic cleaning utensils. They could damage the surfaces.

Always clean the air bed before storing it in the transport bag.

1. Clean the air bed by using a mild soapy solution and damp cloth.
2. Let the air bed dry off completely thereafter.

**Storage**

**NOTICE!**

**Risk of damage!**

If you do not fold the air bed together properly, there is a risk of damaging the surface.

- Avoid sharp creases and pointed corners when folding it up.
- Store the air bed in a dry area.
- Protect the air bed from direct sunlight.
- Store the air bed so that it is not accessible to children, securely locked away and at a storage temperature between +5 °C and +20 °C (room temperature).

To store the air bed, proceed as follows:

1. Make sure that all parts are completely dry.
2. Let the air bed completely deflate before storing it (see chapter “Deflating the air bed”).
3. Lay the air bed down flat with the sleeping surface up and gently fold it as described in the folding instructions (see **Fig. D**).
4. Once the air bed has been folded, store it in the enclosed transport bag **5**.

## Repairing the air bed



### **Risk of fire and explosion!**

Never expose the air bed to flammable materials. There is a risk of fire or explosion.

- Do not use any repair products, such as aerosol tire repair.
  - Only use common PVC repair glue and patches.
  - You can repair small holes in the sides or on the bottom of the air bed with the enclosed repair patch.
  - If the top side of the air bed is damaged, you can repair it with commercially available repair glue.
  - When using repair patches or glue, follow the manufacturer's instructions.
  - If you are unable to repair the damage, dispose of the air bed in accordance with applicable regulations.
  - Clean and dry the repair area thoroughly.
1. Cut a piece out of the repair patch **6**, making sure it is larger than the repair area.
  2. Remove the paper backing, place the patch over the hole, and press down firmly until it is securely attached.
  3. Do not inflate the air bed for at least 30 minutes.

## Technical data

Model number (airbed):	64140
Model number (pump):	AP620A
Supply voltage:	220–240 V~, 50 Hz
Output (pump):	90 W
Protection class:	II
Maximum load bearing capacity:	273 kg
Dimensions (W × L × H):	approx. 152 × 203 × 51 cm
Article number:	98766
Recommended working pressure:	approx. 0.025 bar
Maximum permissible working overpressure:	approx. 0.039 bar

## Declaration of conformity



The EU declaration of conformity can be requested from the address specified on the enclosed warranty card.

## Disposal

### Disposing of the packaging



Sort the packaging before you dispose of it. Dispose of paperboard and cardboard with the recycled paper service and wrappings with the appropriate collection service.

### Disposing of the air bed

(Applicable in the European Union and other European countries with separate collection systems of recyclable materials)



**Old products may not be disposed of in the household waste!**

Should the air bed no longer be capable of being used at some point in time **dispose of it in accordance with the regulations in force in your city or country.** This ensures that old products are recycled in a professional manner and also rules out negative consequences for the environment.



