

English

92PO

## **IMPORTANT SAFETY RULES**

**Read, understand, and follow all  
instructions carefully before installing  
and using this product.**

# Pool Ladder

**Owner's Manual For:**

**52in (132 cm) model**



For illustrative purposes only. Pool is not provided.

**Don't forget to try these other fine Intex products: Pools, Pool Accessories, Inflatable Pools and In-Home Toys, Airbeds and Boats available at fine retailers or visit our website.**

**INTEX®**

## **IMPORTANT! DO NOT RETURN PRODUCT TO STORE**

**To purchase parts and accessories or to obtain non-technical assistance,**

**Visit [www.intexcorp.com](http://www.intexcorp.com)**

**For technical assistance and missing parts call us toll-free (for U.S. and Canadian Residents):**

**1-800-234-6839**

**Monday through Friday, 8:30am to 5:00pm Pacific Time**

**092-\*PO-R1-1210**

**OWNER'S MANUAL**

Warnings.....	3
Parts List & References.....	4-5
Setup Instructions.....	6-8
General Aquatic Safety.....	9
Pool Safety Sign.....	10

TABLE OF CONTENTS

## IMPORTANT SAFETY RULES

Read, Understand and Follow All Instructions Carefully Before Installing and Using this Product.

### WARNING

- Supervise children and those with disabilities at all times.
- Always assist children when they use the ladder to avoid falls and/or serious injury.
- Never dive or jump from this ladder.
- Locate the ladder on a level, solid base.
- One person on this ladder at a time.
- Maximum load: 300 lbs (136 kg). Complies with NF P90-317 strength requirements.
- Face the ladder at all times for entry/exit of pool.
- Remove and secure ladder when pool is not occupied.
- Do not swim under, through or behind ladder.
- Check all nuts and bolts regularly to ensure ladder stays sturdy.
- If swimming at night use artificial lighting to illuminate all safety signs, ladders, pool floor and walkways.
- Assembly and disassembly by adults only.
- This ladder is designed and manufactured for a specific pool wall height and/or deck of the pool. Do not use with other pools.
- The non-respect of the maintenance instruction may result in huge risk for health, particularly for children.
- Only use this ladder for the purposes described in this manual.

**FAILURE TO FOLLOW THESE WARNINGS MAY RESULT IN BROKEN BONES, ENTRAPMENT, PARALYSIS, DROWNING OR OTHER SERIOUS INJURY.**

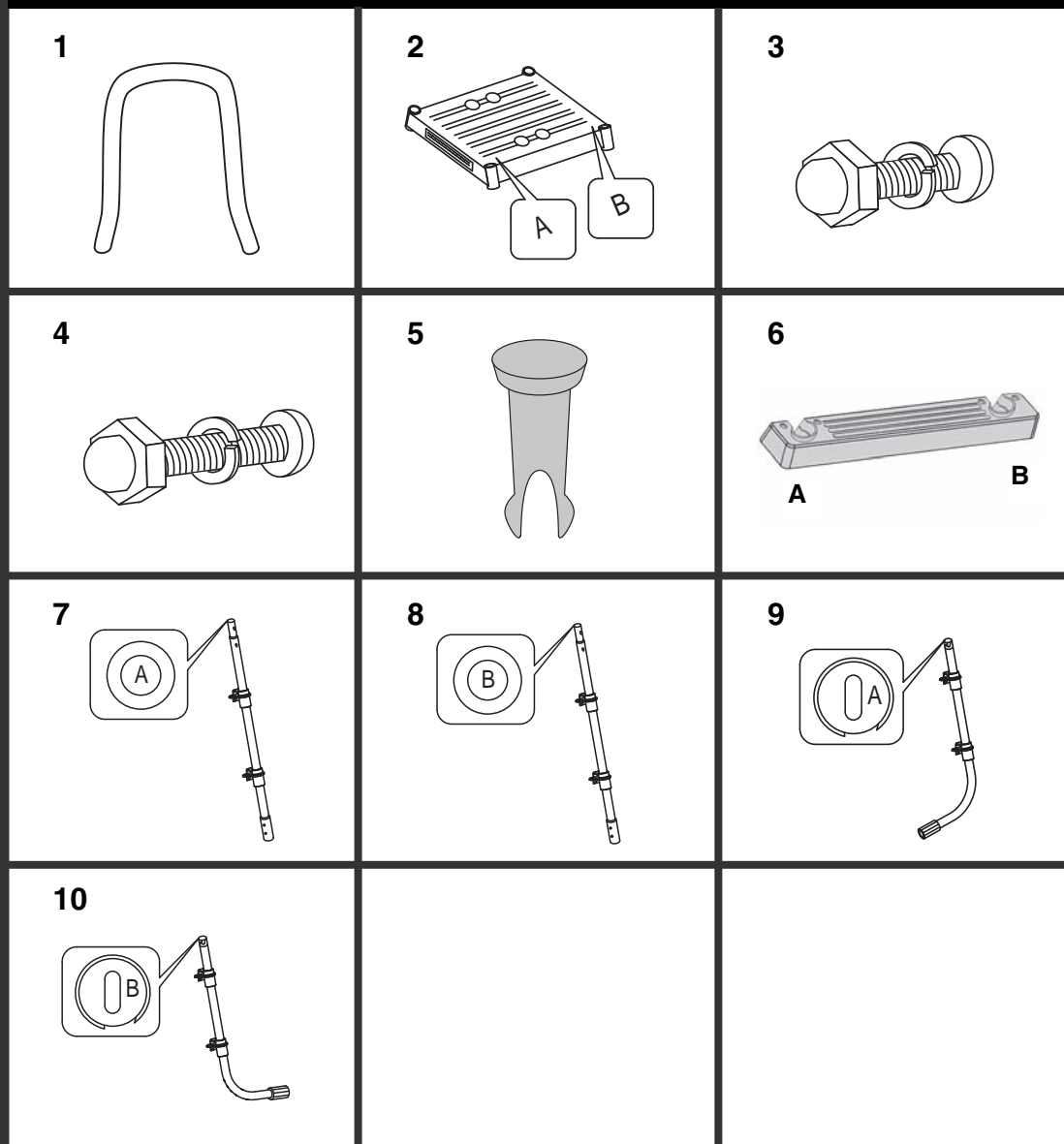
These product warnings, instructions and safety rules provided with the product represent some common risks of water recreation devices and do not cover all instances of risk and danger. Please use common sense and good judgment when enjoying any water activity.

SAFETY RULES

English

92PO

## PARTS LIST



**NOTE:** Drawings for illustration purpose only. Actual product may vary. Not to scale.

This ladder is designed and manufactured for Intex pool wall height:

Item #	Pool Wall Height
58975 (white & blue)	52in (132 cm)
10904 (silver & white)	52in (132 cm)

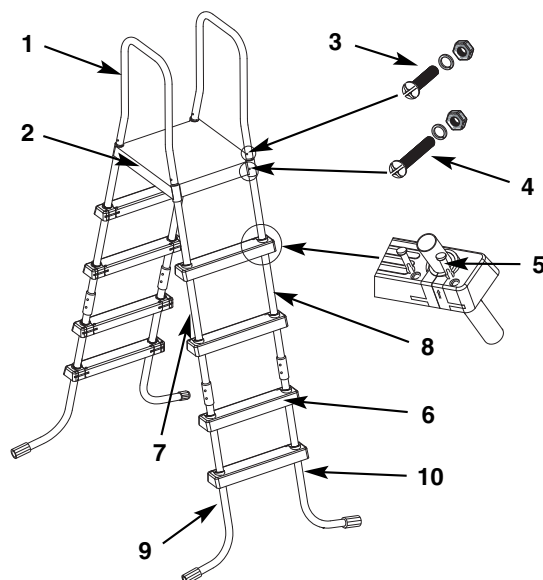
**SAVE THESE INSTRUCTIONS**

Page 4

PARTS LIST

## PARTS REFERENCE

Before assembling your product, please take a few minutes to check the contents and become familiar with all the parts.



**52in (132 cm) model**

**NOTE:** Drawings for illustration purpose only. Actual product may vary. Not to scale.

REF. NO.	DESCRIPTION	QUANTITIES
1	U-SHAPED TOP RAIL	2
2	TOP PLATFORM	1
3	SHORT FASTENER FOR U-SHAPED TOP RAIL (WITH 1 EXTRA)	5
4	LONG FASTENER FOR TOP PLATFORM (WITH 1 EXTRA)	5
5	STEP MOUNTING PIN (WITH 2 EXTRA)	34
6	STEP	8
7	UPPER SIDE LEG ("A" ENGRAVED ON TOP CAP)	2
8	UPPER SIDE LEG ("B" ENGRAVED ON TOP CAP)	2
9	LOWER J-SHAPED SIDE LEG ("A" ENGRAVED ON TOP CAP)	2
10	LOWER J-SHAPED SIDE LEG ("B" ENGRAVED ON TOP CAP)	2

REF. NO.	DESCRIPTION	SPARE PART NO.	
		#58975	#10904
1	U-SHAPED TOP RAIL	10815	10911
2	TOP PLATFORM	11145	11146
3	SHORT FASTENER FOR U-SHAPED TOP RAIL (WITH 1 EXTRA)	10810	10810
4	LONG FASTENER FOR TOP PLATFORM (WITH 1 EXTRA)	10227	10227
5	STEP MOUNTING PIN (WITH 2 EXTRA)	10349	10913
6	STEP	10348	10914
7	UPPER SIDE LEG ("A" ENGRAVED ON TOP CAP)	10822A	10917A
8	UPPER SIDE LEG ("B" ENGRAVED ON TOP CAP)	10822B	10917B
9	LOWER J-SHAPED SIDE LEG ("A" ENGRAVED ON TOP CAP)	11006A	10918A
10	LOWER J-SHAPED SIDE LEG ("B" ENGRAVED ON TOP CAP)	11006B	10918B

## LADDER SETUP

**TOOLS REQUIRED:** One (1) Phillips screwdriver

One (1) pair of pliers or a small adjustable wrench

**IMPORTANT:** Do not fully tighten fasteners until last assembly operation.

### ⚠ WARNING

**ASSEMBLE THE LEGS BEFORE INSTALLING THE LADDER STEPS. FAILURE TO ASSEMBLE THE LEGS BEFORE INSTALLING THE STEPS MAY ALLOW THE LEGS TO SEPARATE FROM THE LADDER DURING USE, POSSIBLY RESULTING IN SERIOUS INJURY OR DEATH.**

- 1. IDENTIFY PARTS:** It is very important to lay out the parts correctly and identify which parts connect together before starting the assembly. Although some parts look alike, they are not always interchangeable. Refer to the parts list.

### ⚠ WARNING

**INCORRECTLY CONNECTED PARTS MAY RESULT IN AN UNSTABLE LADDER OR LADDER FAILURE WHICH CAN CAUSE FALLING AND PERSONAL INJURY OR DEATH.**

**2. LEG ASSEMBLY** (refer to figure 1):

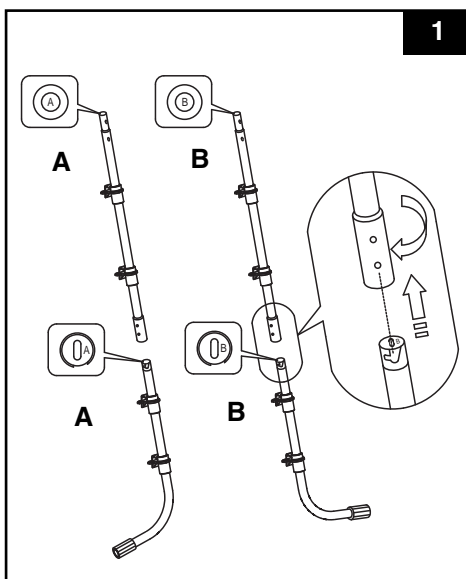
There are two straight upper leg parts (7) marked "A" and two J-shaped lower leg parts (9) also marked "A".

There are also two straight upper leg parts (8) marked "B" and two lower J-shaped leg parts (10) marked "B". The markings are located on the top plastic caps at the end of each leg part.

Connect the "A" upper leg parts with "A" lower leg parts as follows:

- Align the groove on the lower leg part with the notch on the upper leg part - see figure 1.
- Insert the lower leg part into the upper leg part and then turn it clockwise to lock it in place.
- Verify that the plastic step mounting fixtures are aligned and facing the same way on upper and lower leg part. Also lift the upper leg part and verify that the lower leg part is properly inserted/locked and doesn't fall out.

Repeat these steps to connect the "B" upper leg parts with "B" lower leg parts accordingly. **NOTE:** DO NOT MIX "A" PARTS WITH "B" PARTS! You now have two complete "A" legs and two complete "B" legs.



1

## LADDER SETUP (continued)

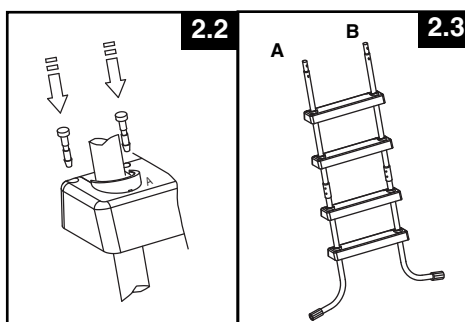
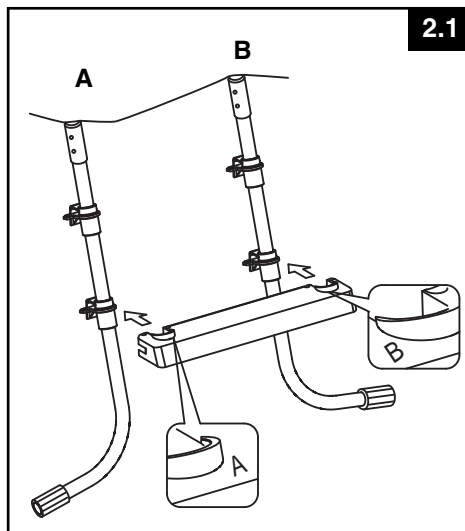
### 3. STEP INSTALLATION (refer to figures 2.1 through 2.3):

Take one complete "A" leg and one complete "B" leg. The steps (6) attach to the mounting fixtures on each leg. Note the markings "A" and "B" next to each attachment slot on each step. "A" side of the step attaches to "A" leg and "B" side of the step attaches to "B" leg - see figure 2.1.

Slide the step over the mounting fixture on the leg and push it all the way until it is completely flush with the mounting fixture.

**Any protrusion of the mounting fixture beyond the step indicates the step is upside-down or otherwise wrongly positioned.**

After ensuring the step is placed correctly, push the mounting pins (5) into the holes on the step, securing the step to the mounting fixture - see figure 2.2 (four pins for each step). Repeat the process with the remaining steps and with the remaining pair of legs. When finished, you will have two complete sides of the ladder. Each side should resemble figure 2.3.

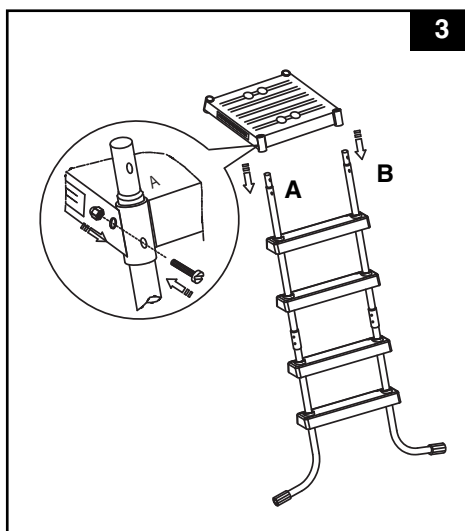


### 4. TOP PLATFORM INSTALLATION – ONE SIDE AT A TIME (refer to figure 3):

Identify hole "A" and hole "B" on the top platforms (2), marked accordingly at each corner. Slide the top platforms over the legs, making sure hole "A" of one corner of platform slides over leg "A" and hole "B" of the other corner of platform over leg "B".

The small holes on the side of platform should align with the lower holes on the legs. Fasten each platform to the legs using the longer fasteners/screws (4).

Do not yet attach the other side of the ladder to the top braces – this assembly step will follow later.



## LADDER SETUP (continued)

### 5. U-SHAPED TOP RAIL

**INSTALLATION** (refer to figure 4):  
Install the U-shaped top rails (1) onto the legs above the top platform (2) and fasten them with the shorter fasteners/screws (3) – see figure 4.

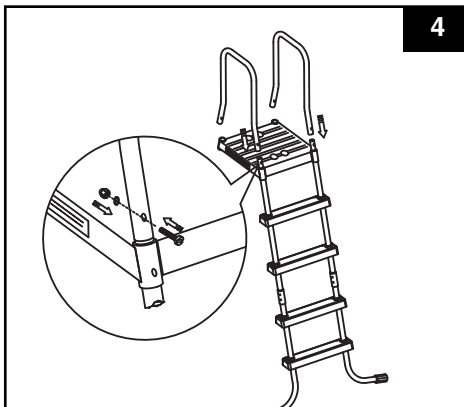
### 6. INSTALLATION OF THE REMAINING LADDER SIDE

(refer to figure 5):  
With all the top rail and top platform holes in alignment, slide the remaining ladder side from the underside into its proper position. Make sure the "A" leg slides into hole "A" of the top platform and the "B" leg slides into hole "B" of the corresponding top platform. Fasten all parts using the appropriate fasteners/screws (4) and (3), as described earlier.

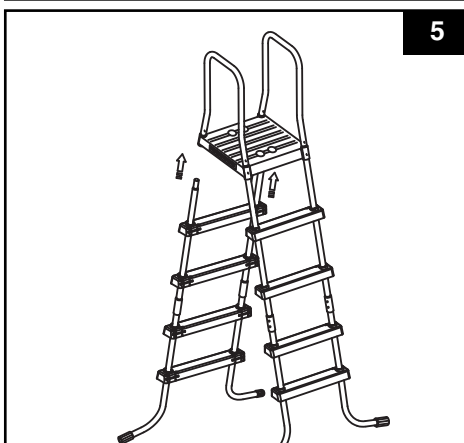
### 7. BEFORE USE OF LADDER:

With all parts now in place, verify that all fasteners/screws are fully tightened and apply downward pressure to each step to be sure they are fully anchored in place. If your ladder came with a ladder barrier, proceed to instructions for ladder barrier installation, otherwise proceed to placing the ladder over the side wall of your pool, with one side of the ladder located inside the pool and the other side outside of the pool - see figure 6.

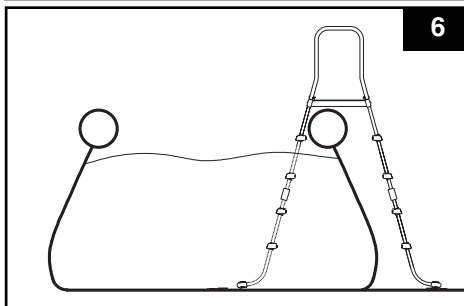
Estimated assembly time 45 minutes.  
(Note the assembly time is only approximate and individual assembly experience may vary.)



4



5



6

## ⚠ WARNING

- Locate ladder on a level, solid base and make sure the ladder is stable and safe to climb.
- Remove and secure ladder away from the pool when the pool is not in use to prevent unauthorized, unintentional or unsupervised pool entry.
- Check all nuts and bolts regularly and before each use to ensure the ladder is sturdy. See maintenance instructions.

### 8. MAINTENANCE:

Regularly check all nuts, bolts, step mounting fixtures and step mounting pins to ensure all parts are secured properly and the ladder is sturdy. Bring the ladder indoors and store in a safe and dry area, preferably between 32 degrees Fahrenheit (0 degrees Celsius) and 104 degrees Fahrenheit (40 degrees Celsius).



## GENERAL AQUATIC SAFETY

Water recreation is both fun and therapeutic. However, it involves inherent risks of injury and death. To reduce your risk of injury, read and follow all product, package and package insert warnings and instructions. Remember, however, that product warnings, instructions and safety guidelines cover some common risks of water recreation, but do not cover all risks and dangers.

For additional safeguards, also familiarize yourself with the following general guidelines as well as guidelines provided by nationally recognized Safety Organizations:

- Demand constant supervision. A competent adult should be appointed as a "lifeguard" or water watcher, especially when children are in and around the pool.
- Learn to swim.
- Take the time to learn CPR and first aid.
- Instruct anyone who is supervising pool users about potential pool hazards and about the use of protective devices such as locked doors, barriers, etc.
- Instruct all pool users, including children what to do in case of an emergency.
- Always use common sense and good judgement when enjoying any water activity.
- Supervise, supervise, supervise.

For additional information on safety, please visit

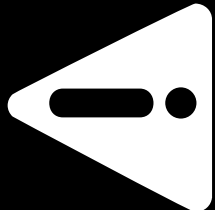
- The Association of Pool and Spa Professionals: The Sensible Way to Enjoy Your Aboveground/Onground Swimming Pool [www.nspi.org](http://www.nspi.org)
- American Academy of Pediatrics: Pool Safety for Children [www.aap.org](http://www.aap.org)
- Red Cross [www.redcross.org](http://www.redcross.org)
- Safe Kids [www.safekids.org](http://www.safekids.org)
- Home Safety Council: Safety Guide [www.homesafetycouncil.org](http://www.homesafetycouncil.org)
- Toy Industry Association: Toy Safety [www.toy-tia.org](http://www.toy-tia.org)

### SAFETY IN YOUR POOL

Safe swimming depends on constant attention to the rules. The "NO DIVING" sign within this manual can be posted near your pool to help keep everyone alert to the danger. You may also wish to copy and laminate the sign for protection from the elements.

SAVE THE CARTON FOR STORAGE AND THE INSTRUCTIONS  
FOR RE-ASSEMBLY

**POST THIS WARNING NEAR YOUR POOL**

 **WARNING**

**NO DIVING OR JUMPING  
SHALLOW WATER**

**DIVING MAY RESULT IN PERMANENT INJURY OR DEATH**



- Be Safe. Swim with a friend.
- Children must be accompanied by an adult.
- Don't swim when using alcohol or drugs.
- Be familiar with the pool before swimming.
- No running, jumping, or horseplay in or around pool.
- No glass in pool area.



**TO AVOID SERIOUS INJURY ALL POOL USERS MUST KNOW AND FOLLOW THESE SAFETY RULES.**

English



INTEX

***For Residents of the U.S. & Canada:***

**INTEX RECREATION CORP.**

**Attn: Consumer Service**

**1665 Hughes Way**

**Long Beach, CA 90801**

**Phone: 1-800-234-6839**

**Fax: (310) 549-2900**

**Consumer Service Hours:**

**8:30 am to 5:00 pm Pacific time**

**Monday thru Friday only**

**Website: [www.intexcorp.com](http://www.intexcorp.com)**

***For Residents outside of the U.S. and Canada:***

***Please refer to the Service Center Locations***

©2011 Intex Marketing Ltd. - Intex Development Co. Ltd. -  
Intex Trading Ltd. - Intex Recreation Corp.

All rights reserved/Tous droits réservés/Todos los  
derechos reservados/Alle Rechte vorbehalten.

Printed in China/Imprimé en Chine/Impreso en  
China/Gedruckt in China.

®™ Trademarks used in some countries of the world under  
license from/®™ Marques utilisées dans certains pays sous  
licence de/Marcas registradas utilizadas en algunos países  
del mundo bajo licencia de/Warenzeichen verwendet in  
einigen Ländern der Welt in Lizenz von/Intex Marketing Ltd.  
to/à/a/an Intex Trading Ltd., Intex Development Co. Ltd.,  
G.P.O Box 28829, Hong Kong & Intex Recreation Corp.,  
P.O. Box 1440, Long Beach, CA 90801 • Distributed in the  
European Union by/Distribué dans l'Union Européenne  
par/Distribuido en la unión Europea por/Vertrieb in der  
Europäischen Union durch/Intex Trading B.V., P.O. Box nr.  
1075 – 4700 BB Roosendaal – The Netherlands

