



Prestige Airbed

15PO

WITH BUILT-IN PUMP

READ AND FOLLOW ALL INSTRUCTIONS BEFORE INFLATING OR USE

BEFORE INFLATING WITH BUILT-IN PUMP

- Spread the airbed out on a flat surface. Make sure this surface is free of stones or others sharp objects which might puncture the airbed.
- The built-in air pump inflation valve **1** must face up.
- Make sure that the 2 in 1 **2** valve cap is properly positioned and the exhaust valve cap is securely tightened.

TO INFLATE USING THE BUILT-IN PUMP

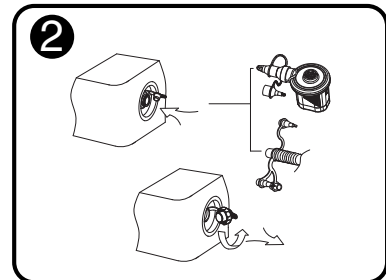
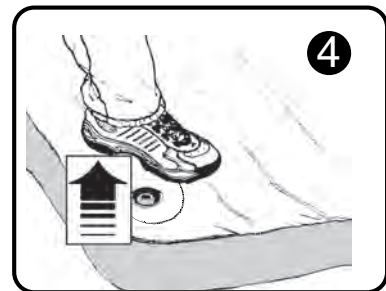
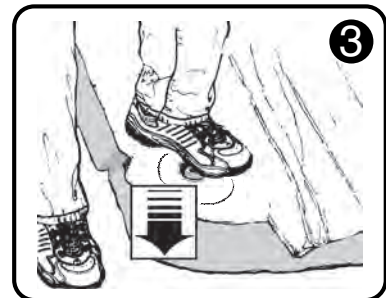
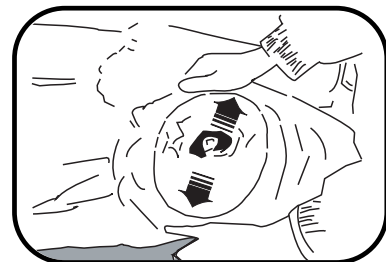
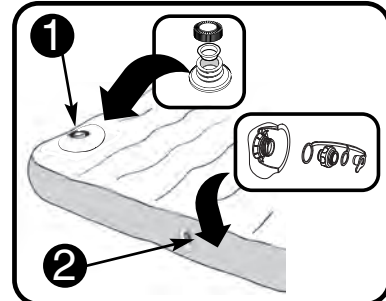
- Remove the air pump inflation valve cap and insert plug **1**. Save the cap and plug to reattach after inflation.
- Locate and spread the built-in foot pump out to ensure the foot pump surface is flat and straight.
- Placing your foot directly over the inflation valve opening, push firmly down **3**. This will push air from the air pump chamber into the bed.
- Release your foot **4** so the air pump chamber will re-fill with air for the next cycle.
- Repeat until desired firmness is achieved.
- Replace the air pump inflation valve insert plug and cap **1**.

TO INFLATE USING AN EXTERNAL AIR PUMP

- Make sure the air pump inflation valve **1** insert plug is properly positioned and the 2 in 1 **2** exhaust valve cap is securely tightened.
- Pull 2 in 1 **2** valve cap to open.
- Insert the nozzle from an air pump into the 2 in 1 **2** inflation valve.
- Inflate the product to approximately 80% of desired firmness.
CAUTION: To prevent bursting, do not over inflate or use high pressure air compressor.
- Close 2 in 1 **2** valve cap securely after inflation.

TO DEFLATE

- Carefully unscrew the 2 in 1 **2** exhaust valve cap to release the air.
CAUTION: When opening, point the exhaust valve away from any person.
- Replace the 2 in 1 **2** exhaust valve cap back when the product is completely deflated.



IMPORTANT

Air inside of bed may expand and contract with varying temperature leading to reduce pressure inside of the bed. If this occurs, simply add more air using the pump to achieve desired firmness. If puncture occurs, please refer to instruction. Repair kit/patch is enclosed.

SAVE THESE INSTRUCTIONS

©2011 Intex Marketing Ltd. - Intex Development Co. Ltd. - Intex Trading Ltd. - Intex Recreation Corp.
All rights reserved/Tous droits réservés/Todos los derechos reservados/Alle Rechte vorbehalten.
Printed in China/Imprimé en Chine/Impreso en China/Gedruckt in China.

®™ Trademarks used in some countries of the world under license from ®™ Marques utilisées dans certains pays sous licence de/Marcas registradas utilizadas en algunos países del mundo bajo licencia de/Warenzeichen verwendet in einigen Ländern der Welt in Lizenz von/Intex Marketing Ltd. to/a/a/an Intex Trading Ltd., Intex Development Co. Ltd., G.P.O. Box 28829, Hong Kong & Intex Recreation Corp., P.O. Box 1440, Long Beach, CA 90801 • Distributed in the European Union by/Distribué dans l'Union Européenne par/Distribuido en la unión Europea por/Vertrieb in der Europäischen Union durch/Intex Trading B.V., P.O. Box nr. 1075 - 4700 BB Roosendaal - The Netherlands
Consumer Service 1-800-234-6839

015-*PO-R1-1207